

ALL THE FEATURES OF WOOD

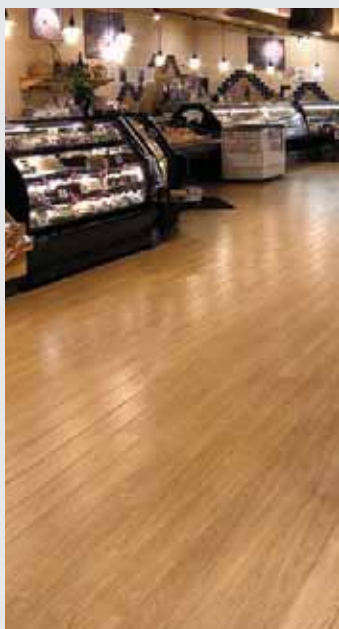
WITHOUT ALL THE FEATURES OF WOOD



ICORE II[®]
ADVANCED COMPOSITE FLOORING



Mannington **Works.**



ICORE II[®]

ADVANCED COMPOSITE FLOORING

All the features of wood, without all the features of wood

ICORE II advanced composite flooring from Mannington Commercial is the natural solution for bringing the rich visual appearance of wood into commercial environments. Its superior scratch and stain resistance is engineered for today's demanding interiors.

Beneath its natural exterior, ICORE II's INNERCORE[®] technology includes a waterproof core which provides dimensional stability and unique sound-dampening chambers. The result? A quiet and comfortable flooring solution.

Installation of ICORE II is a snap, its Loc-N-Go[™] System delivers faster and easier installations. As a floating floor system, ICORE II eliminates most costly subfloor preparations. Forget about harsh cleaning agents, strippers or polishes – just sweep and damp mop for easy maintenance.

Specify ICORE II for your next commercial project. Choose from a generous selection of natural wood grain surfaces to capture your design intent.



ICORE II®





ICORE II®

features

- Features a generous selection of 21 natural wood grain surfaces in rich enticing colors
- INNERCORE® Technology, a waterproof core providing dimensional stability and unique sound-dampening chambers for a quiet and comfortable floor
- Available in 5" x 48" plank width with subtle micro-beveled edges
- High performance wearlayer offers scratch and stain resistance along with superior clarity
- Recommended for high traffic areas with 1160 PSI
- Loc-N-Go™ System for faster and easier installation
- Floating floor system eliminates most costly subfloor preparations and is not affected by excess moisture in concrete subfloors
- Low maintenance – simply sweep and damp mop

Environmental Attributes

- Contains 5% pre-consumer recycled content by total product weight
- Third party certified by FloorScore
- Meets CHPS 01350 Indoor Air Quality
- Can install over most existing flooring – keeping obsolete materials out of landfills
- Eliminates the need for harsh cleaning agents, strippers and polishes due to its cleanability and durability
- Domestically produced in High Point, North Carolina
 - May contribute to LEED Credits MR 5.1 and 5.2
- Third party certified via the FloorScore IAQ testing program. FloorScore is an alternative compliance path to LEED EQ Credit 4.3. Meets CHPS 01350 IAQ test, passed and listed. Manufactured in High Point, North Carolina and can contribute to LEED RM Credit 5.1 and 5.2. Adhesives meet VOC content limit SCAQMD Rule #1168 and can contribute to LEED IEQ Credit 4.1.



Wood Visuals

- 21 styles 10 "Quick Ship" & 11 "Special Order"
- Fine & coarse wood grain surfaces
- Matching moldings are available: reducer; t-molding; quarter round; wallbase

Quick Ship Patterns - Available to ship within 5 days



33200 Heritage Oak Natural



33201 Heritage Oak Golden



33202 Heritage Oak Gunstock



33203 Mountain Ash Coffee Bean



33204 Vermont Maple Natural



33205 Argentine Rosewood Natural



33206 Vintage Cherry Auburn



33207 Classic Cherry Natural



33208 Classic Cherry Merlot



33209 Basic Beech Natural

Special Order Patterns - Available to ship within 3 weeks



33210 Canyon Beech Natural



33211 Acacia Nutmeg



33212 Wild Pecan Toffee



33213 Century Oak Antique



33214 Whitewash Oak Natural



33215 Distressed Pine Natural



33216 Heirloom Pine Antique



33217 Butternut Honeytone



33218 Northern Red Oak Brandy



33219 Chinese Bamboo Natural



33220 Barn Oak Honey

ICORE II®





ICORE II®

performance

Overview

- High Performance Wearlayer 4mil (0.1mm); Al₂O₃ (AC4 rating)
- Décor sheet 4mil (0.1mm)
- Scratch & dent resistant
- Stain resistant
- Moisture resistant
- No polishing
- No refinishing
- Low maintenance
- Static load – 1160 psi
- Coefficient of friction (ASTM-C-1028): Meets or exceeds ADA Guidelines at 0.6
- INNERCORE® Technology - waterproof core
- Ultra micro-beveled edges
- Loc-N-Go™ design for ease of installation
- Low emitting

Product Characteristics

- Plank size 5"W x 48"L x 19/64"D (11/32" installed height with Whisper 3-N-1 underlayment)
- 2.2 lbs per plank (0.998kg)
- Side & end click design
- Order one (1) case of Core Weld™ per 480 SF of plank
- Mannington Whisper 3-N-1 underlayment roll sizes are 6' x 50' (300 ft) x 0.039" (1mm thick)

Packaging

- 26.72 ft (2.48 m) per carton (16 planks)
- 40 cartons per pallet
- 1,068.8 ft (99.3 m) per pallet
- 35.2 lbs (16.0 kg) per carton
- 1,408 lbs (638.7 kg) per pallet

Installation – General Overview

- Planks do not need to acclimate, but keep within a 30° temperature range
- Whisper 3-N-1 underlayment (High density PE/PP foam) provides a vapor barrier (no additional films required)
- Use Core Weld™ on all end and side joints as a final step of installation
- Keep 5/16" expansion/contraction space around walls, doors, columns, etc.

Maintenance - General Instructions

- Sweep and damp mop as needed
- Use slow speed rotary brush for deep cleaning
- No abrasive cleaners or scouring agents
- No high speed machines and aggressive pads

Specifications

Construction	Advanced Composite Flooring, with ultra-micro-beveled edges
Base plank	INNERCORE® Technology – waterproof core
Size	5" x 48" (127mm x 1219.2mm)
Thickness	19/64" (7.5mm)
Installed thickness	11/32" (8.5mm) w/ Whisper 3-N-1 underlayment
Coverage	26.72 ft (2.48 m) per carton (16 planks)
Weight per carton	35.2 lbs (16.0 kg)
Weight per plank	2.2 lbs (0.998 kg)
Installation method	Floating floor using Loc-N-Go™ System
Side & end plank sealer	Core Weld™ 8 oz. can cover 80 sq. ft. of plank (236.6 ml)
Side & end click design	no splines/end splines required
N.B.S. Smoke Chamber Test (ASTM-E-662)	<450
Flooring Radiant Panel (ASTM-E-648)	Class 1
Coefficient of Friction (ASTM-C-1028)	Meets or exceeds ADA guidelines at 0.6
Impact Sound Transmission IIC (ASTM-E-492)	60 (with Underlayment) Mannington Underlayment roll sizes are 6' x 50' (300 ft) x 0.039" (1mm thick)
Static load NALFA Stds (3.1) for commercial rating	1160 psi



ICORE II® advanced composite flooring

All the features of wood, without all the features of wood

natural wood visual

- 21 realistic hardwood finishes
- textured wood plank design for depth and dimension

ultimate durability

- excellent visual clarity
- abrasion resistant wear surface
- impact resistant
- scratch and stain resistant
- moisture resistant surface
- low maintenance
 - eliminates harsh cleaning agents, strippers and polishes
- 1160 PSI commercial static load limit



Loc-N-Go™ System

- quick, easy installation
- Core Weld™ required to complete a fast, easy and water resistant installation

ultra micro-beveled edges

- subtle micro-bevel edges resist dirt and debris entrapment

INNERCORE® Technology

- unique sound-dampening chambers for a quieter underfoot
- waterproof core provides ultimate dimensional stability
- uniform, solid base for enhanced load distribution
- floating floor system eliminates most costly subfloor preparations
- lower profile design allows for easy flooring transitions

ICORE II® moldings

Finish the Mannington Commercial ICORE II® floor with moldings that blend with and enhance its appearance.



reducer strip

For joining ICORE II® flooring to another floor of different height such as resilient or carpet.



t-molding

Used to cover the expansion space between ICORE II® floors and other floors of approximately the same height.



wall base

Covers the expansion space between the floor and the wall.



quarter round

Covers the expansion space between the floor and a wall.



ICORE II®

recommended installations





Educational/Institutional		Hospital/Healthcare		Retail (continued)	
Classrooms	HR	Patient Rooms	R	Specialty Shops/Areas	HR
Laboratories	NR (b)	Patient Corridors	HR	Produce Areas	HR
Computer Labs	NR (4)	Operating Rooms	NR (1)	Entryways	HR
Multipurpose Rooms	HR (e)	Scrub Rooms	NR (1,2)	Frozen Food	HR
Cafeterias, Dining Areas	HR	Emergency Rooms/Areas	R	Office	
Food Service Areas	R	Procedure Rooms	R	Offices/Conference Rooms	HR
Dormitory Rooms	HR	Laboratories	NR (1)	Computer Rooms	NR (4)
Locker Rooms (no spikes)	NR (3)	Physical Therapy	R	Corridors	HR
Lavatories	R	Dialysis	NR (2)	Lobbies	HR
Corridors	R	Hyperbaric Rooms	NR (4)	Elevators	R
Ramps	NR (3)	Critical/Intensive Care	NR	Vestibules/Entryways	HR
Utility/Storage Areas	R	Ramped Corridors	NR (3)	Lunchrooms	HR
Light Industrial		Utility/Storage Rooms	R	Utility/Storage Rooms	HR
Research Laboratories	NR (b)	Assisted Living		Lavatories	R
Production Laboratories	R	Corridors	HR	Hospitality	
Clean Rooms	NR (2,b)	Residence Kitchens	HR (a)	Vestibules/Entryways	HR
Small Parts Assembly	R	Games/TV Rooms	HR	Lobbies	HR
Sterile Packaging	R	Lavatories	R	Elevators	R
Photo Processing	R	Retail		Dining Rooms	HR
Computer Repair Labs	NR (4)	Sales Floors	HR	Corridors	HR
Electronic Testing Labs	NR (4)	Checkout/Cash Wrap	HR	Hospitality Rooms	HR
Electronics Manufacturing	NR (4)	Food Service (Dining)	HR	Lavatories	R
				Lounges	HR
				Indoor Pool/Spa Decks	NR (2,3)

Each of the following classifications – HR (Highly Recommended), R (Recommended), NR (Not Recommended) – are based on performance, cost, and the design criteria of the space, not solely on performance.

HR: Highly Recommended – An excellent floor for the space.

R: Recommended – Other floors may be better suited.

NR: Not Recommended – Should not be used in this space.

The following code explains why a floor receives an NR recommendation.

1. Aseptic Area – Hygienic conditions are extremely important.
2. Water Resistance – Wet area installation is necessitated (flash covering, sealed seams).
3. Slip Retardance – A more secure surface is dictated.
4. Static control flooring normally called for in this area.

NOTE:

- a. ICORE II floors are not recommended for use in commercial kitchens, including behind deli and fast food counters.
- b. ICORE II floors are not recommended in laboratories that require special decontamination procedures on surfaces, including floors.
- c. ICORE II floors are not recommended for exterior use or where golf or track shoes are present.
- d. ICORE II floors are not suitable as wall covering or wall surfacing.
- e. ICORE II floors are not recommended for dance studios where tap shoes are present.



ICORE II®





Getting Started

Assemble all tools listed below before beginning the installation process.

Tools & Materials	
CoreWeld™	Carpenter's square
Mannington Whisper 3-N-1 underlayment	Transition moldings
Spacing wedges – 5/16" (1 cm)	Hand or power jamb saw
Pull bar	Circular saw, or preferably Bullet® Cutter
Utility knife	Drill
Tapping block	Chalk line
Pencil	Blue masking tape
Tape measure	Safety glasses*

*Always wear safety glasses when using hammer or power equipment. Follow safety instructions and MSDS Data Sheets.

*For future repairs, wrap remaining panels in original box and store in a normal, dry interior storage area at normal room temperature.

Sub Floor Conditions

- Can be installed over structurally sound wood and concrete sub floors on all grade levels.
- Sub floor must be clean and free of debris.
- Sub floor must be level to within 1/4" per 10-foot span.
- Low spots can be filled using Mannington's MVP 2023 floor patching compound.
- Sanding or grinding must be used to remove high spots.
- Can be installed over most existing hard surface flooring. Remove hardwood floors that are glued down over concrete.
- Can be installed over most ceramic tile floors.
- Can be installed over radiant heated flooring. (Maximum Temperature 90°)
- ICORE II should not be installed over carpet.
- Jobsite installation temperature should be between 60° and 95°.
- ICORE II is intended for indoor use in buildings that are climate controlled.

1. Carefully remove existing wall base, trim, and transition moldings. Measure out the entire work area to ensure proper panel layout. Make sure the last panel to be laid in the work area will be no less than 2" wide. If not, the first panel to be laid in the work area must be cut to compensate the difference in the last panel. Install Mannington Whisper 3-N-1 underlayment, only unroll one sheet at a time during installation to prevent damaging the underlayment. Once the first sheet of Mannington Whisper 3-N-1 underlayment is covered with ICORE II flooring, install the second sheet. Do not overlap sheets. Butt the two edges of the sheet together and seal with duct tape.

NOTE: Mannington Whisper 3-N-1 is a closed cell construction & does not require a moisture barrier if installed on or below grade.

2. Position 5/16" - wide spacing wedges 5" apart, 3 rows of plank at a time. Progressively move the top spacer down to the next row to be started. Keep spacers 18" apart along the top edge of the top row throughout the installation. After completing all rows of plank relocate spacers from along the edges to the bottom, or last plank row completed. Apply a small amount of pressure just prior to application of Core Weld™. Make sure all head seams are tight prior to applying core weld. Spacers must be positioned around pillars, posts, pipes, thresholds, etc., to mark the required expansion gap.

- Undercut all bottom door casings so the new flooring will fit underneath. Use a scrap piece of the ICORE II plank and Whisper 3-N-1 underlayment as a guide. Make the cut using a hand or power jamb saw. Be certain to allow enough room under the casing for an expansion gap.

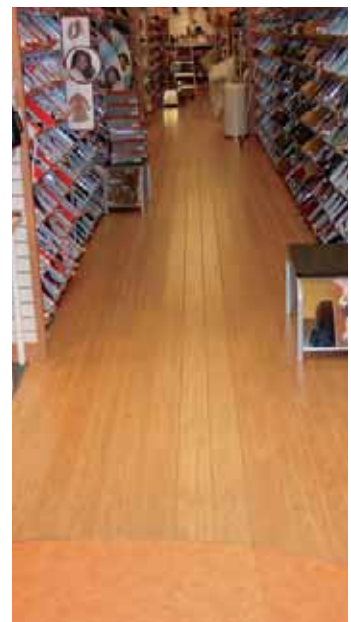
Laying and Adhering

- Once the starting wall has been determined, begin laying the ICORE II planks along the wall using spacers or adjustable wedges to maintain the expansion gap. It is imperative that this row be installed straight and tight at all end joints. Cut the last plank to fit.

NOTE: ICORE II planks can be cut using traditional cutting tools such as hand saws, jig saws, circular saws, power miter or chopsaws, etc. However, the preferred cutting tool, which will minimize dust & noise is a guillotine, or Bullet® type cutter. Establish an area away from the work area for cutting and utilize "dust" containment systems when cutting. Keep the "dust" out of the work area.

- ICORE II planks incorporate a durable side click profile design, which simplifies the installation process. Planks can be assembled tongue-to-groove, or groove-to-tongue according to the installer's preference.
- The plank head seams have a horizontal click tongue & groove profile machined into the ends of each plank. This design enables the installer to first connect the side seams and then join the head seams horizontally either by hand, or with a tapping block. It is important that when using a tapping block, or similar device that you only tap on the tongue-side of the plank head seam. Following this instruction will assure that the decorative layer is not damaged.
- Typically the cut-off plank from the first row can be used to start the second row providing that it is 12" or longer. Stagger the end joints of the second row by at least 12" from the end joints in the first row.
- If using a tapping block be careful not to use too much force, or contact the decorative surface of the plank.
- Randomly stagger the end joints to achieve a random and aesthetically pleasing appearance.
- Closely inspect these first three rows to assure that everything is straight and true. Be certain that all end joints are tight and aligned. If necessary, adjust these three rows of ICORE II planks using adjustable wedges before proceeding with the installation. It is sometimes helpful to secure the alignment of these three rows with blue, non-marring masking tape.

NOTE: Continue installing the planks across the work area. Periodically throughout the installation, check to be certain that the panels are staying straight and true. Maintain the 5/16" expansion gap.





11. More than likely the last row of planks will need to be rip cut to fit. Remember this last row must be at least 2" wide. Scribe the last row of panels as required maintaining the 5/16" expansion gap. Install the cut planks and pull into place with a pull bar.
 12. Fill the Core Weld™ applicator and screw on the applicator tip. Snip off the very top of the applicator tip to the second ring.
 13. Apply an even application of weld to all end and side joints.
 14. The majority of the Core Weld™ will penetrate into the joint and will also evaporate quickly from the surface of the flooring; however, wipe the area with a clean cloth to ensure that all of the Core Weld™ has been removed from the surface.
- NOTE: After welding is complete, pour unused weld back into the can. Do not store Core Weld in the applicator bottle.
15. Use the appropriate finish molding or terminating profile as a transition to door thresholds, steps, or other floor coverings. When installing base, caution must be taken to not nail into ICORE II planks; planks must have the ability to move / expand as building / subfloor shifts. ICORE II has matching moldings for all running line decor colors. The moldings include reducers, T-molding, quarter-round and wall base. T-molding and reducers have a rigid aluminum core for added durability.



wall base



reducer strip



t-molding



quarter round

Repairs

Always inspect each panel closely before installation; however, if damage occurs after installation, the following repair procedures may be used.

If a panel is slightly damaged or chipped, fill it using Mannington Color-Matched Patchal Pencils. Follow all directions described on the container.

1. To replace an entire damaged panel, begin by drilling two 1/2" holes in each end of the damaged plank approximately 1/2" back from all four plank corners and as close to the plank end joints as possible. Drill two more holes in the damaged plank approximately 4" to 5" in from the previously drilled holes. Use extreme caution when drilling to prevent damage to adjoining panels and underlayment.
2. To remove the panel you must cut the center with a circular saw. You may want to draw a line between the holes to serve as your cutting guide to prevent mistakes. Set the saw to the precise depth of the plank (19/64", or 7.5mm) to prevent cutting into the underlayment or subfloor make a saw cut across the middle of the pre-marked center section. Starting in the center of the plank cut along the guidelines to the inner holes and continue the saw cut out to the pre-drilled end holes.
3. Wearing gloves or using vise-grip type pliers grasp one half of the center strip and lift up and out. It may be helpful to pass a utility knife through the end joint to break the CoreWeld. Remove the remaining half of the center section.
4. Remove the remaining plank pieces by rocking up and down with vise-grip type pliers to separate the groove edge of the replacement panel from the tongue of the adjoining planks. An alternative method is to drill several holes along the length of the remaining plank pieces. Insert a sturdy screwdriver or drift pin into the holes and tap toward the center with a hammer. Use extreme caution when removing the damaged panel to prevent harm to adjoining panels.





5. Prepare the replacement plank by cutting off the plank's bottom flange of the groove along one side and both ends. The flange can be cut off using a table saw or by cutting with a utility knife with a new, sharp blade.
6. Apply Core Weld™ to the seams and quickly slide the repair panel into place by placing the uncut groove side over the existing spline, allowing the cut flange side to rest on the adjoining groove. Apply an additional application of Core Weld™ at all seams and wipe off the excess with a clean cloth.
7. Weight the repair panel and avoid active foot traffic for approximately 12 hours after the repair has been completed.

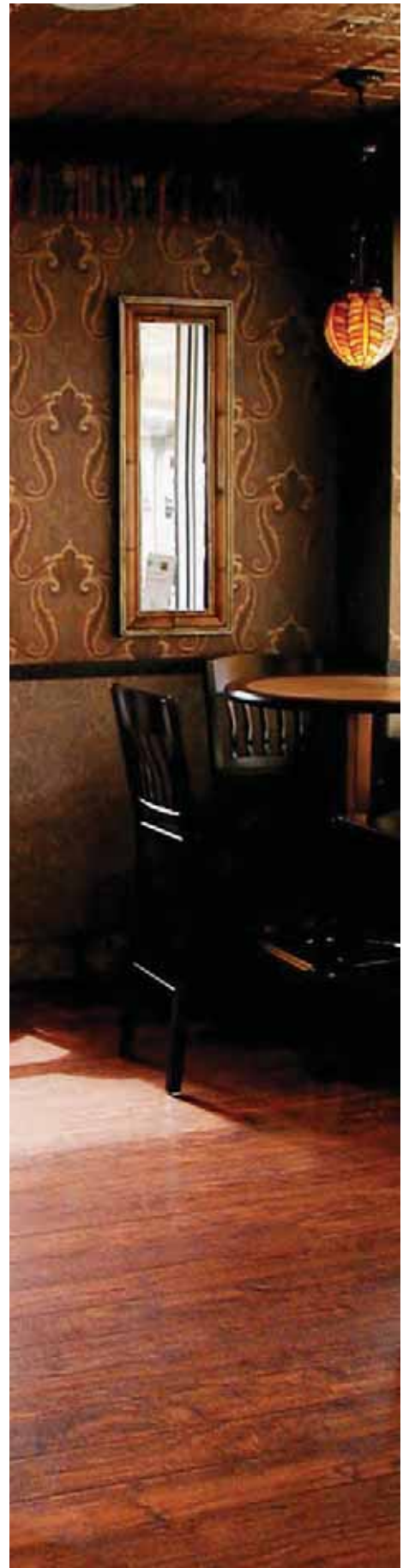
Cautions and Miscellaneous

- Furniture should be moved onto the newly installed floor using an appliance hand-truck over hardboard runways.
- Do not place heavy items on newly installed floor for at least 48 hours after completion of the installation. Heavy furniture should be equipped with suitable non-staining, wide-bearing casters.
- Floors subjected to excessive heat and light exposure is subject to thermal degradation. Use appropriate precautions to minimize potential affects on the floor.
- Oil or petroleum-based products can result in surface staining. Do not track asphalt driveway sealer or automobile oil drips onto the floor.
- Use non-staining walk-off mats. Rubber can discolor floor.



ICORE II®





ICORE II Maintenance Recommendations

ICORE II Advance Composite Flooring is an extremely low maintenance floor. Follow these easy steps to ensure that your ICORE II floor will continue to look as good years from now as it did the day it was installed:

Regular Maintenance

- Sweep or damp mop as needed to eliminate loose dust and debris
- Wipe soiled spots with a cloth dampened with clean water or mild neutral cleaner
- After damp cleaning, wipe off excess water with clean dry cloth
- Remove tough, stubborn stains such as paint, adhesive, asphalt, oil, etc., with alcohol, acetone, or nail polish remover
- Any scuffing from shoes can easily be removed with a damp cloth
- For stubborn instances, use a mild ammonia based spray cleaner

NOTES:

- Never use soap, wax, polish, or lacquer on ICORE II. Doing so may damage the wear surface, causing it to be slippery or retain unattractive smudges.
- Never use abrasive cleaners such as scouring powder, steel wool, or rotary sanding pads.
- Never use a steam cleaner.
- Never use any type of sealant on ICORE II.
- Never flood the floor with water.

Damaged Planks

- Scratches and small gouges can easily be fixed using color matching patch pencils and/or melt in color repair sticks.
- Heavily damaged planks should be removed and a new plank installed following the procedures outlined in the ICORE II Installation section.

Light to Medium Soils

1. Sweep and/or dust mop (non-treated dust mop) the floor to remove all dirt or grit.
2. Thoroughly clean the floor using JohnsonDiversey STRIDE™ Neutral Cleaner, according to label instructions.

Heavy Soils

1. Sweep and/or dust mop (non-treated dust mop) the floor to remove all dirt or grit.
2. Thoroughly clean the floor using JohnsonDiversey GP FORWARD™ General Purpose Cleaner, according to label instructions.

Spot and Stain Removal

Use JohnsonDiversey General Purpose Spotter™ to remove stains (RTU). Apply product, allow product to dwell for 3-4 minutes, scrub with soft brush, rinse and wipe with clean, damp cloth.

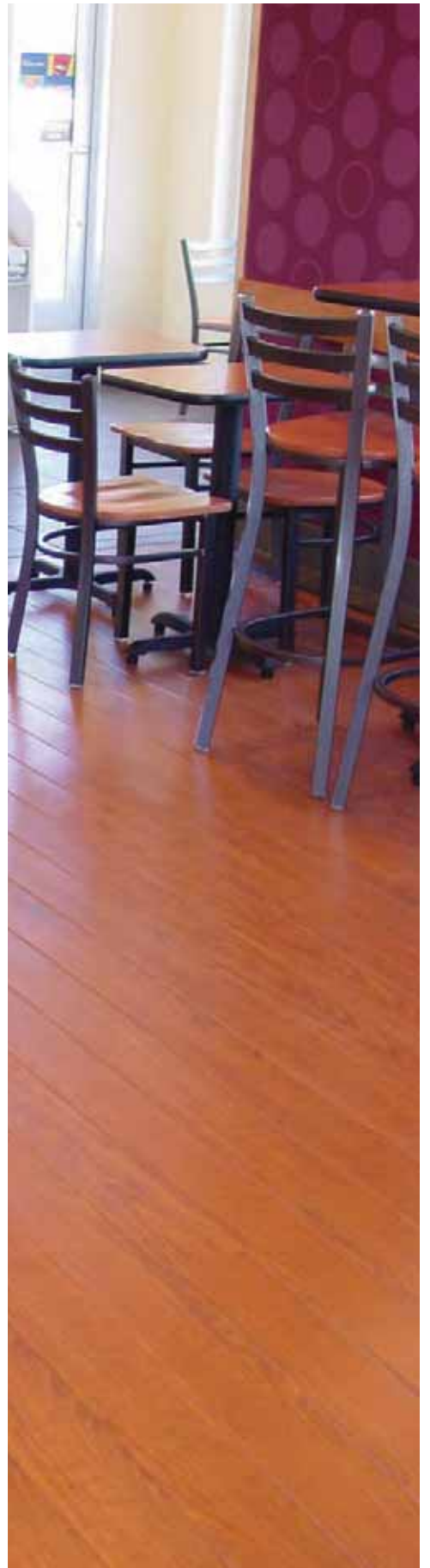
NOTE:

- When using products, refer to MSDS for personal protective equipment requirements.
- Use recommended pads/brushes when maintaining ICORE II.
- STRIDE™ Neutral Cleaner and GP FORWARD™ General Purpose Cleaner are available in gallons, 5-gallon bib, and J-Fill™ Dispensing system. General Purpose Spotter™ is available (RTU) in quarts.
- Chemical resistance testing indicates that STRIDE™ Neutral Cleaner, GP FORWARD™ General Purpose Cleaner, and General Purpose Spotter™ does not change or damage ICORE II floors. For JohnsonDiversey Technical support call 1-800-558-2332.



ICORE II®





The following warranty conditions apply to Mannington ICORE II flooring when installed in commercial applications in accordance with the Mannington Professional Installation Guide.

Limited 10-Year Commercial Warranty on Mannington ICORE II, Advanced Composite Flooring. Mannington warrants from the date of original installation, that for ten (10) years of commercial use, ICORE II planks ("planks") will be free of manufacturing defects and will not fade under artificial light or sunlight, stain or show wear through the image layer, and will resist water damage under normal conditions.

A plank that does not perform as stated will be repaired to conform with this warranty. If repair is not commercially practical, Mannington will replace the plank with the same style product, if it is still available, or with a comparable product from the current running line. Replacement plank(s) will be provided at no charge to the end user. If the floor was installed by a professional flooring contractor hired by you, Mannington will also cover reasonable labor costs for installation of replacement planks.

ICORE II Pre-Installation Warranty

We will guarantee your satisfaction with each ICORE II plank. Should any ICORE II plank not meet your satisfaction because of a visual defect, simply return it to your Mannington flooring contractor, PRIOR TO INSTALLATION, for a replacement.

Warranty Conditions

This warranty does not cover defects or damage to ICORE II planks caused by (i) installation or maintenance that does not comply strictly with the instructions set forth in the Mannington Professional Installation Guide, and Care & Maintenance Instructions, (ii) abuse (e.g. abrasives like steel wool to scour the floor, sliding heavy objects across the floor without proper protection), or (iii) severe accidents (e.g. fire, burns). This warranty covers water damage from normal use, excluding natural disasters.

This warranty applies only to the original purchaser and installation site(s) and is not transferable.

This warranty is valid for commercial installations.

Any area that receives replacement plank(s) must be cleared, at the consumer's expense, of any equipment, furnishings, partitions, etc., that have been installed or put into place over the plank(s) subsequent to the original installation.

This warranty does not cover planks installed with obvious visual defects.

Implied Warranties

There are no implied warranties, including merchantability and fitness for a particular purpose, extending beyond the terms of this written warranty.

NOTE: Some states or provinces do not allow the exclusion or limitation of incidental or consequential damages, or limitations on how long an implied warranty lasts, so the above limitations may not apply to you. This warranty is in lieu of all other express warranties and gives you specific legal rights and you may also have other rights which vary from state to state or province to province in Canada.

Warranty Claims

IF THERE IS A MANUFACTURING DEFECT, YOU MUST IMMEDIATELY PROVIDE WRITTEN NOTICE OF SUCH DEFECT, TOGETHER WITH PROOF OF PURCHASE TO THE FLOORING CONTRACTOR FROM WHOM THE FLOOR WAS PURCHASED. THIS NOTICE MUST BE RECEIVED BY THE FLOORING CONTRACTOR WITHIN THE WARRANTY PERIOD FROM THE DATE OF PURCHASE. The flooring contractor will notify Mannington, who will arrange inspection of the floor or to review the complaint with the dealer. Should this inspection or review indicate an obligation on the part of Mannington, such obligation will be satisfied through your flooring contractor.

If you need maintenance advice or have any questions about Mannington products please call 1-800-241-2262 or write to Mannington Resilient Floors, P.O. Box 30, Salem, NJ 08079. In Canada, write to P.O. Box 67021, 3200 Erin Mills Pkwy., Mississauga, Ontario L5L 5W9 Canada.



ICORE II[®]

ADVANCED COMPOSITE FLOORING